



# GMT MONTHLY MEMBERSHIP PROGRESS REPORT

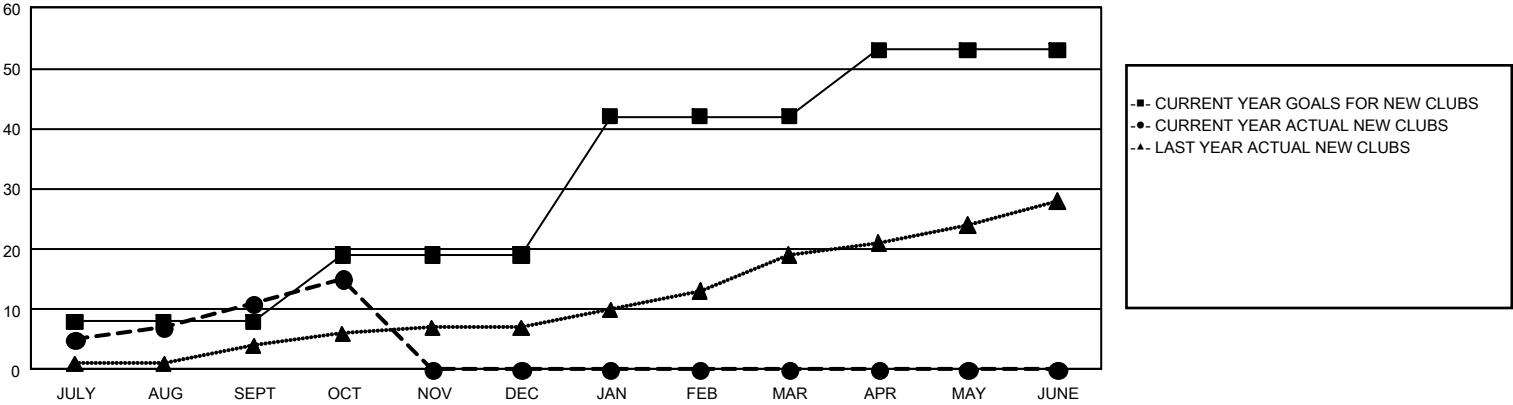
## GAT Constitutional Area 5 - Japan

Results as of: 10/31/2025

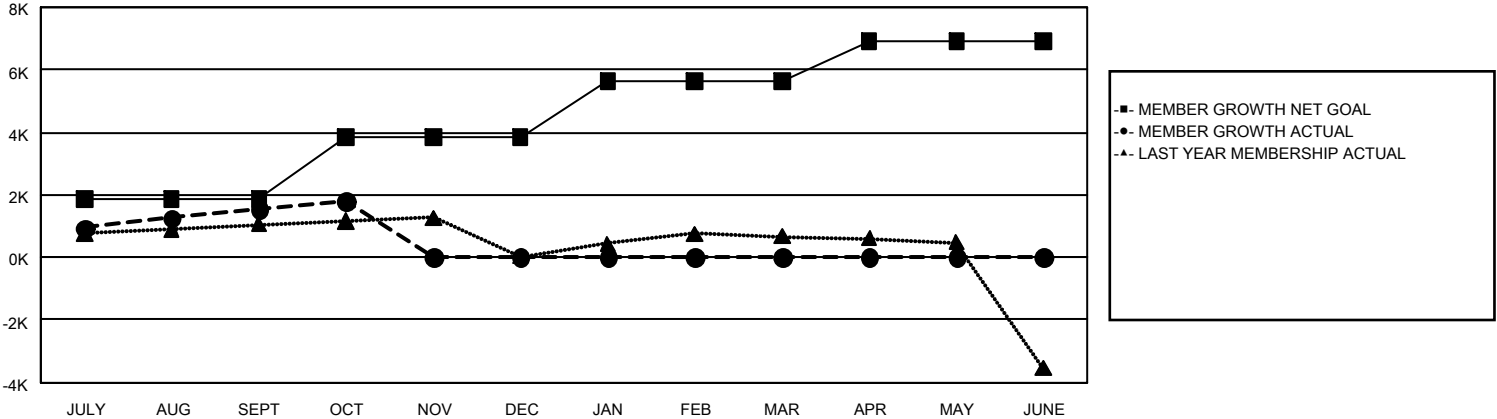
REPORT DOES NOT INCLUDE CLUBS IN UNDISTRICTED AREAS.

Clubs				Members			
RESULTS FOR 2025-2026				RESULTS FOR 2025-2026			
QUARTER	NEW CLUB GOAL	NEW CLUBS	DROPPED CLUBS	QUARTER	MEMBER GROWTH NET GOAL	MEMBER GROWTH ACTUAL	DROPPED MEMBERS ACTUAL (including transfers)
JULY/AUG/SEPT	8	11	4	JULY/AUG/SEPT	1,850	3,299	1,493
OCT/NOV/DEC	11	4	1	OCT/NOV/DEC	1,994	586	317
JAN/FEB/MAR	23	0	0	JAN/FEB/MAR	1,787	0	0
APR/MAY/JUNE	11	0	0	APR/MAY/JUNE	1,271	0	0

GOALS AND ACTUAL NEW CLUBS CUMULATIVE



GOALS AND ACTUAL MEMBERS CUMULATIVE



DROPPED CLUBS: 5		1,347 CLUBS OF 2,666 ADDED 1 OR MORE NEW MEMBERS	<u>GENDER DISTRIBUTION</u>	
			MALE	70,925 (77.28%)
			FEMALE	20,830 (22.70%)
<u>DROPPED MEMBERS</u>		<a href="#">CLICK HERE FOR CUMULATIVE MEMBERSHIP DATA</a>		
DECEASED	202		TOTAL FAMILY UNIT MEMBERS 24,699	
CLUB CANCELLED	3			
OTHER	1,598		FAMILY MEMBERS PAYING HALF DUES 13,711	
TOTAL	1,803			